



# Grid Connection Services

# Clutch Grid Connections

---

Navigating the grid connection process has never been more challenging. Grid connection risk has been identified as the number one risk for energy developments and grid connection facilities - this has been demonstrated by projects experiencing significant project delays, increased costs, and reduced energy output. Development activity is as high as it has ever been and resources are stretched.

The grid connection typically distracts the project team from the other higher value project streams, i.e. major contracts, land and approvals and project financing. The frequency and complexity of market change is directly impacting project delivery and outcomes. The grid connection has never been more important and in focus as it is today.

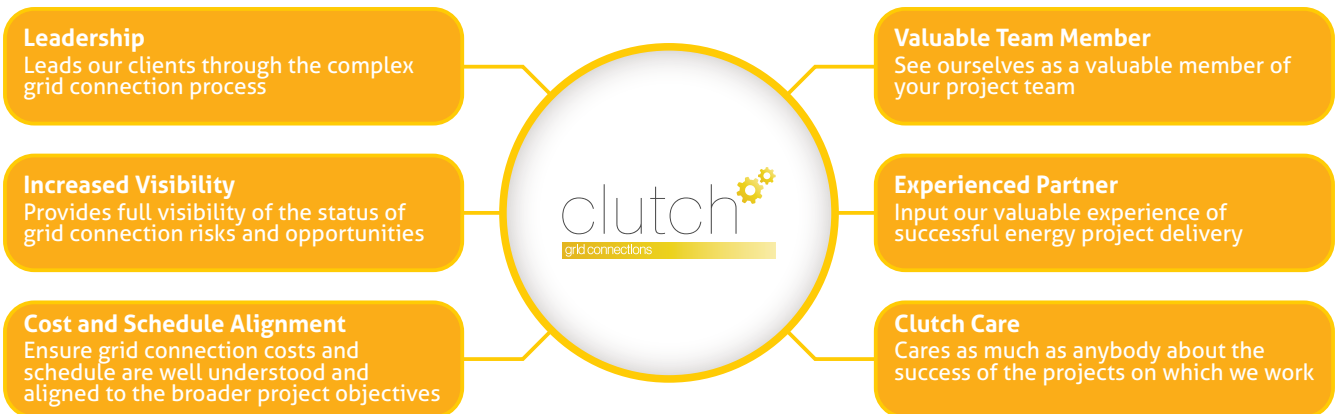
The NEM is undergoing a once-in-a-century transformation creating even more complexity for connecting parties. This transformation is punctuated by:

- The requirement to double the electricity the NEM now delivers, requiring a nine-fold increase in utility-scale variable renewable energy capacity, and a five-fold increase in distributed photovoltaics,
- Treble the firming capacity including utility-scale batteries, hydro storage, gas generation, and smart behind-the-metre batteries, and
- A significant requirement for new transmission to facilitate new generation.



# Leading The Grid Connection

The Clutch approach to leading grid connections is summarised in the diagram below:



The key benefits delivered to our clients include:



**Increased Confidence** - Our aim is to provide comfort to individuals and teams. Access is provided to experience when it is needed most. We help make our client's job easier through experience, problem solving, risk assurance and mitigation leading to increased project confidence.



**Resource Continuity** - We provide resource continuity through our dedicated and committed resources. Our team is across market changes and challenges providing our clients with the assurance and agility using the best practice methodologies to progress grid connections.



**Less Surprises** - Dedicated grid connection risk management support and ongoing visibility. Our team aims to provide increased visibility of risks for peace of mind, saving you time and cost.



**Grid Connection Leadership** - coordinating internal and external teams throughout the process. Pushing past challenges to deliver key outcomes. Working with, understanding and influencing key stakeholders.



**The Right Information at the Right Time** - Regular and planned scans to provide advanced and detailed understanding of changes impacting client strategies. We aim to guide our clients through market and industry change, reducing impacts and capturing opportunities.



**Unique understanding** - of key drivers and the requirements of regulated monopolies and project developers. We partner with key stakeholders to deliver the best outcomes and efficient path for your projects. This means a streamlined, lower cost connection process, efficiencies and solid alignment with key stakeholders.

**In leading the grid connection process, Clutch's overarching objectives are to ensure:**

- all stakeholders are treated and feel like part of the team;
- all necessary information to support a competitive business case is obtained;
- the grid connection outputs support other key project streams of Major plant procurement, EPC contacts, project financing, PPA and Offtake contract and land/development approvals.

**The end-to-end Clutch Consulting grid connection approach is separated into the following key phases:**

**1 | Early Planning**

Clutch Consulting will develop the necessary plans and strategies to prepare the project for a successful grid connection process.

**2 | Initial Network Engagement**

This phase helps to align the key network stakeholders with the overall project plan, schedule and budget.

**3 | Pre Connection Application**

The Clutch team will firm up connection options and support business case development prior to commencing the formal grid connection process.

**4 | Connection Application & Preparing for Financial Investment Decision**

The objective of this phase is to work closely with all grid connection related stakeholders to ensure the relevant commercial agreements and regulatory approvals are in place to support financial close.

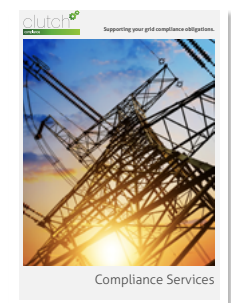
**5 | Design and Construction**

The key objective is to ensure all NSP activities (construction, procurement, technical and regulatory) occur effectively and efficiently to allow for on-time energisation and commissioning of the project.

**6 | Network Ready**

During this phase, Clutch will manage all internal and external stakeholder inputs and approvals for energisation, registration, testing, and commissioning.

The team at Clutch can also provide a dedicated service to deliver full transparency of the status of grid related compliance obligations for the asset. **Download our Compliance Services Brochure.**








Clutch is a leading professional service firm providing a wide range of grid connection advisory services aimed at assisting our clients define, manage, and minimise the impacts of grid connection risk. We exist to enable growth and progress in the energy industry so that our people can make the difference to our clients' projects.

Our vision is to be the Australasian leaders in Electricity Networks. We aim to apply our deep knowledge of electricity networks and our collaborative working approach to optimise and de-risk grid connection outcomes for our clients and infrastructure networks. The team at Clutch have a strong pedigree when it comes to grid connection. Our team have been involved in successfully connecting around 50 projects to the grid.

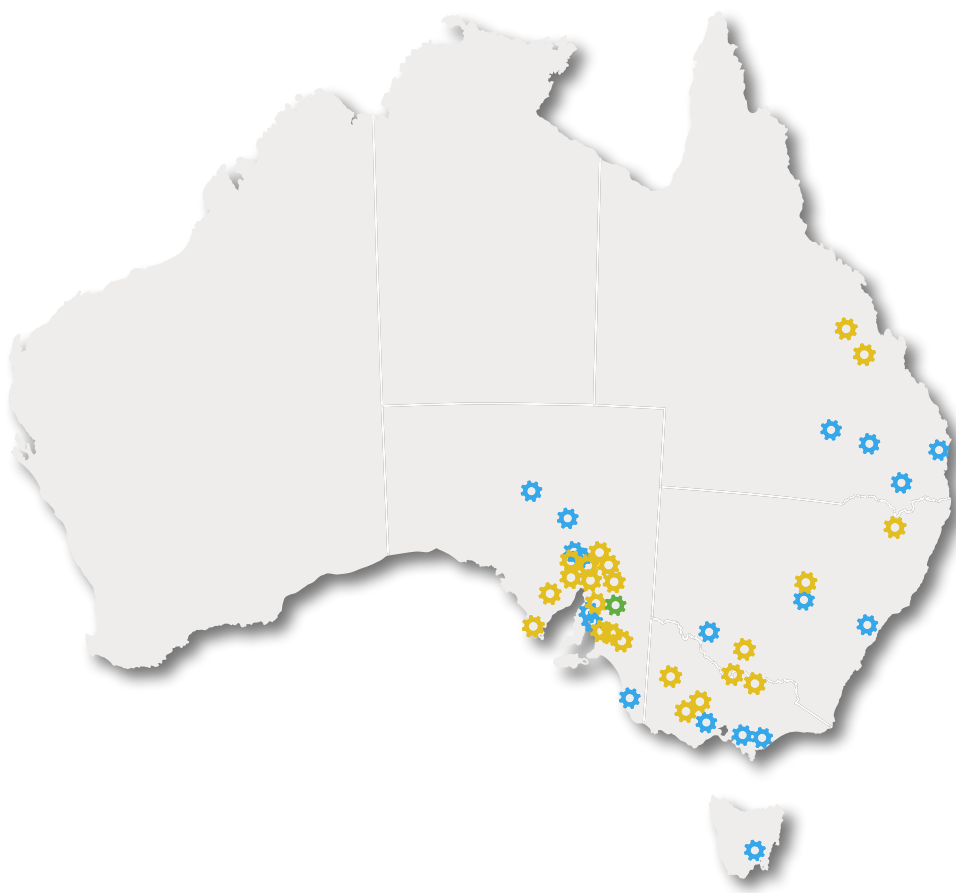
Clutch is nationally focused and understand the grid connection risk for each energy project is unique. Our diverse and experienced team provides the advice and support services that are not only of the highest quality, but also tailored to your specific needs.

The Clutch Group has aligned its service delivery to the client asset lifecycle. This provides a specialist business unit to support our clients through each of the following three asset lifecycle phases:

1. Strategy and Concepts	2. Project Development	3. Asset Operations
 <p><b>Clutch Strategic</b> Tailored strategies to navigate grid complexity</p>	 <p><b>Clutch Grid Connections</b> Leading the grid connection process</p>	 <p><b>Clutch Compliance</b> Supporting your grid compliance obligations</p>

# Projects & Industries We Work In

---



Our clients are our partners



# Our Team

---



**Managing Director +  
Grid Connection Specialist  
Scott Connel**

Scott is the founder and Director of the Clutch group of companies. Scott has over 18 years' experience in driving commercial, financial and strategic decisions in the energy market.



**Director +  
Grid Strategy Lead  
Jezac Crowe**

Jezac is a co-founder and Director of the Clutch group of companies. Jezac is a specialist in the leading the commercial transaction and process for high value grid connections related investment decisions.



**Partner +  
Grid Connection Specialist  
Nathan Potter**

Nathan is a Partner of the Clutch group of companies. Nathan has a decade of experience in managing new grid connections and working with facilities connected to the national electricity market.



**Grid Connection Specialist  
Mitch Baker**

With strong communication skills, account management expertise, and a strong balance of technical and commercial acumen, Mitch is well placed to help our clients plan and manage the delivery of outcomes.



**Grid Compliance Lead  
Phil Court-Kowalski**

Phil is a seasoned senior leader with 35+ years' experience spanning multiple sectors in Australia, Germany and the UK. Phil's highly inclusive approach to client work ensures the delivery of excellent technical and commercial outcomes.



**Grid Compliance Specialist  
Dylan Trenerry**

Dylan has over a decade of regulatory experience in Local Government. Dylan's out of the box thinking to client projects aims to deliver on positive compliance outcomes and avoid non-compliances.

[clutch.com.au](https://clutch.com.au)



**Location**  
Unit 806/147 Pirie St  
Adelaide SA 5000

**Contact**  
+61 437 113 034  
[info@clutch.com.au](mailto:info@clutch.com.au)

